

A Practical, Efficient Shelter Solution By Clean Air Yurts

**30 Crispell Ln, New Paltz, NY 12561
610-295-4681
matt@cleanairyurts.com**

Clean Air Yurts Yurt Homes are engineered structures that are suitable for many purposes. They are quick and easy to construct, making them ideal for the average person. The all-steel construction makes the Yurt Home perfect for longer-term use, since they are weatherproof, fire-proof and termite-proof. They are also movable, making them well-suited to transitional shelter needs. The round shape of the Yurt Home allows the unit to withstand high winds. They are also virtually earthquake proof.

Overall size is 18' diameter with an 8' tall wall height.

Galvanized Sidewall Sheets

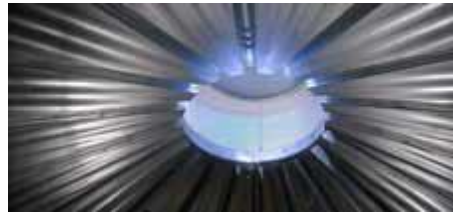
Sidewall sheets are made of 20 gauge galvanized steel. The galvanization makes the exterior maintenance-free and the units have a 70-year life span. Sidewalls are 8' high and the overall structure stands 13.5' from floor to roof peak.

Double Roof Structure

The roof of Yurt Home was specifically designed to allow ventilation and prevent overheating of the interior area. The cupola allows ventilation and is made of high strength, perforated galvanized steel. The continuous eave vent keeps rainwater from entering the structure while allowing constant ventilation, regardless of wind direction.



The louvered outer roof provides constant shade for the primary roof decking, creating a barrier to prevent overheating of the interior of the unit. Louvers in the outer roof allow the hot air to escape, while allowing rain water in for collection at the eave.



Water Collection System

Yurt Homes have water collection potential. Rainwater is captured by the louvers in the outer roof. This water, along with any water that condenses between the shield and the roof, can be collected in receptacles fastened to the eave.

Safety and Security

Yurt Homes feature a fullsize, lockable, steel door. Windows have lockable exterior doors with 16 gauge perforated steel interior screens that allow ventilation while still providing security.



Anchoring Options

There are three different anchoring options for the Yurt Home. The structures can be mounted to concrete or penetrable soils using anchor bolts. They can also be secured to non-penetrable surfaces using the ballast boxes, which are standard on every Yurt Home. The ballast boxes can also be used as garden boxes.



Interior Space

Each Yurt Home is 18' in diameter and has 254 ft² of usable interior space. A loft may be added to provide additional room. Multiple units can be grouped together to create multi-room structures.



Building Your Yurt Home

Each shipment comes complete with everything needed to erect a complete Yurt Home. Homes are shipped as one unit and assembled on-site with basic hand tools, which are provided. Inexperienced laborers can erect a home in less than two days. All sidewall and roof sheets have the bolt holes prepunched and aligned. Every home is manufactured with advanced roll forming equipment to ensure close tolerances for a high quality shelter.

Other Considerations

13 - 14 units fit in a standard shipping container. No special equipment is needed to transport a Yurt Home. Solar panel for lighting and an outlet for charging a cell phone are optional.

